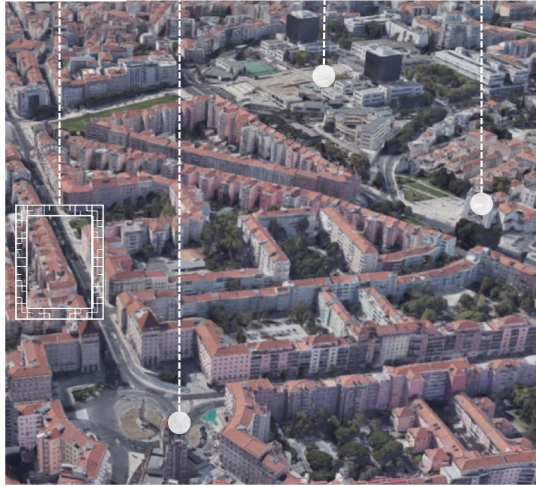


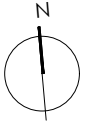
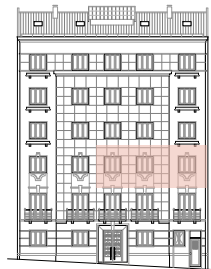
# ALMIRANTE REIS 246



ALMIRANTE REIS 246 Pç. Areeiro I. S. Técnico Pç. Londres



Floor 2 left - T4  
Gross Interior Area 146,7 sqm



www.reabilita.pt  
info@reabilita.pt  
+351 919 235 265

THE GROSS AREA CORRESPOND TO THE TOTAL AREA OF THE UNIT, MEASURING FROM THE OUTER PERIMETER OF THE WALLS AND WALLS SEPARATING THE AXES OF THE UNIT, NOT INCLUDING TERRACES AND BALCONIES. THE AREAS INDICATED IN THE COMPARTMENTS ARE NET INTERNAL AREAS, MEASURED FROM THE INSIDE PERIMETER OF THE WALLS AND INCLUDE THE AREAS OF CABINETS. ALL ELEMENTS ON THIS DOCUMENT ARE MERELY AN INDICATION AND DO NOT HOLD ANY CONTRACTUAL VALUE. THIS PROJECT IS CURRENTLY UNDER CONSTRUCTION, THUS THE DEVELOPER RESERVES TO HIMSELF THE RIGHT TO CHANGE ANY DEFINITION AS A RESULT OF TECHNICAL OR SUPPLY RESTRICTIONS.

# ALMIRANTE REIS 246

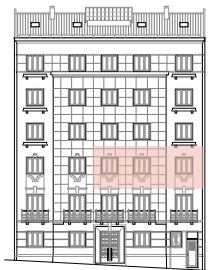


## Building overview

- 100 mts from metro station (Areeiro)
- photovoltaic panels for energy production in common areas
- pre-existent elevator
- LED lights
- rehabilitation of stairs and hall with existing materials

## Apartments overview

- double glazed PVC window frames
- recovered pre-existent doors
- wardrobes as represented in plan
- LED lights



## Living room

- pre-existent hardwood floor
- air conditioning multisplit system
- plasterboard ceiling
- sunscreen blinds



## Kitchen

- natural stone floor, countertop and backsplash
- lacquered cabinets doors
- electric water heat by Vulcano
- Zanussi appliances (hob, oven, microwave, extractor, dishwasher, fridge freezers, washer-dryer)

# ALMIRANTE REIS 246

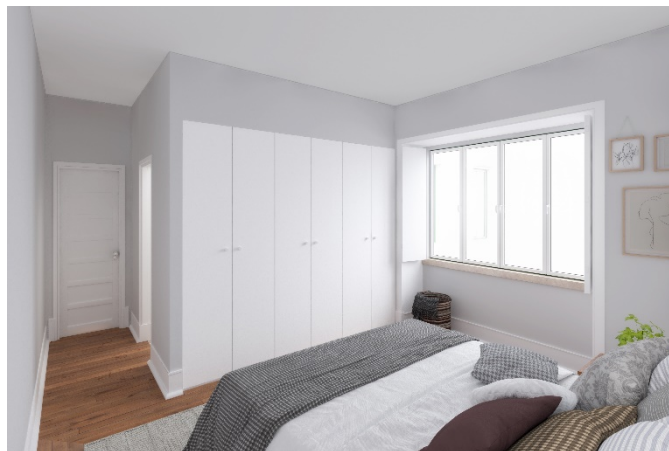
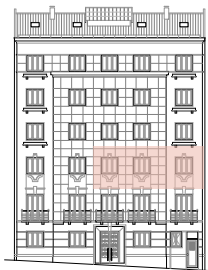


## Building overview

100 mts from metro station (Areeiro)  
 photovoltaic panels for energy production in common areas  
 pre-existent elevator  
 LED lights  
 rehabilitation of stairs and hall with existing materials

## Apartments overview

double glazed PVC window frames  
 recovered pre-existent doors  
 wardrobes as represented in plan  
 LED lights



### Suite

pre-existent hardwood floor  
 Daikin air conditioning multisplit system  
 plasterboard ceiling  
 wooden shutters



### Bedroom 1

pre-existent hardwood floor  
 Daikin air conditioning multisplit system  
 plasterboard ceiling  
 wooden shutters



### Ensuite bathroom

manual tiles and painted walls  
 natural stone floor  
 natural stone shower tray, countertop and washbasin  
 Sanitana and Bruma equipments  
 towel warmer



### Common bathroom

semi-manual tiles and painted walls  
 concrete floor  
 varnished Viroc cabinet (TBC)  
 enameld bathtub  
 Sanitana, Cifial and Bruma equipments  
 towel warmer