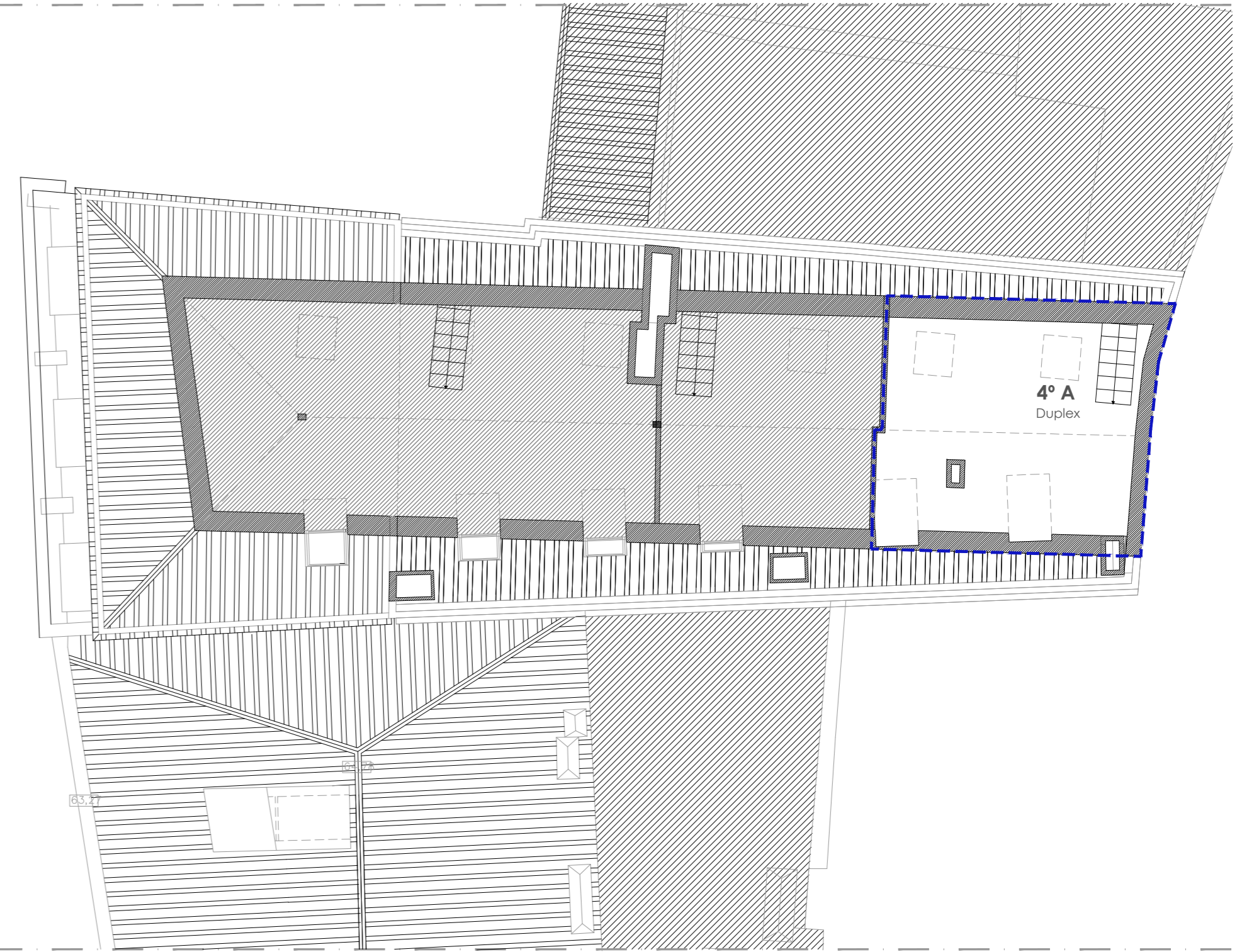





PISO 4



PISO 5

| | | |
|---|---|-----------|
| CALÇADA DE S. VICENTE 68 A 72 | | 4A |
| REQUERENTE:  Reabilita | Rua do Instituto Industrial, 18, 2º Esq 1200-225 Lisboa | |
| ARQUITECTURA: Pedro Galvão Lucas OA.21645 T.916685829 m.pedro@reabilita.pt | | |
| PLANTAS PISOS 4 e 5 | ESCALA 1:100 | |