

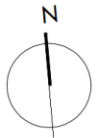
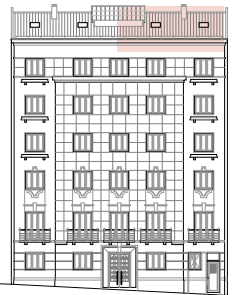
ALMIRANTE REIS 246



ALMIRANTE REIS 246 Pç. Areeiro I. S. Técnico Pç. Londres



Floor 5 left – T4 duplex
 Gross Interior Area 184,9 sqm
 Exterior area 9,3 sqm



www.reabilita.pt
 info@reabilita.pt
 +351 919 235 265

THE GROSS AREA CORRESPOND TO THE TOTAL AREA OF THE UNIT, MEASURING FROM THE OUTER PERIMETER OF THE WALLS AND WALLS SEPARATING THE AXES OF THE UNIT, NOT INCLUDING TERRACES AND BALCONIES. THE AREAS INDICATED IN THE COMPARTMENTS ARE NET INTERNAL AREAS. MEASURED FROM THE INSIDE PERIMETER OF THE WALLS AND INCLUDE THE AREAS OF CABINETS. ALL ELEMENTS ON THIS DOCUMENT ARE MERELY AN INDICATION AND DO NOT HOLD ANY CONTRACTUAL VALUE. THIS PROJECT IS CURRENTLY UNDER CONSTRUCTION, THUS THE DEVELOPER RESERVES TO HIMSELF THE RIGHT TO CHANGE ANY DEFINITION AS A RESULT OF TECHNICAL OR SUPPLY RESTRICTIONS.

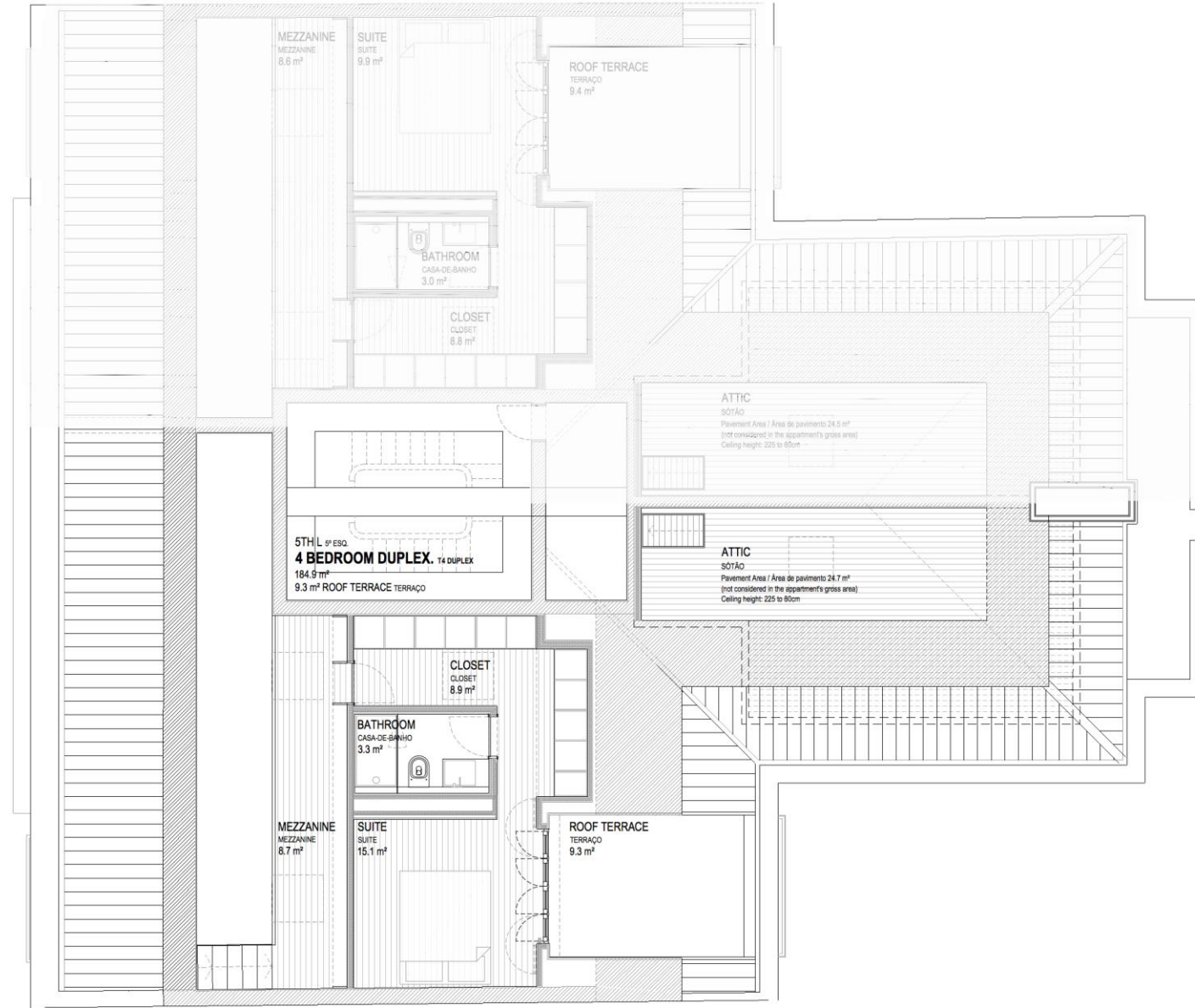
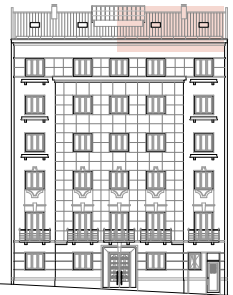
ALMIRANTE REIS 246



ALMIRANTE REIS 246 Pç. Areeiro I. S. Técnico Pç. Londres



Floor 5 left – T4 duplex
 Gross Interior Area 184,9 sqm
 Exterior area 9,3 sqm



www.reabilita.pt
 info@reabilita.pt
 +351 919 235 265

THE GROSS AREA CORRESPOND TO THE TOTAL AREA OF THE UNIT, MEASURING FROM THE OUTER PERIMETER OF THE WALLS AND WALLS SEPARATING THE AXES OF THE UNIT, NOT INCLUDING TERRACES AND BALCONIES. THE AREAS INDICATED IN THE COMPARTMENTS ARE NET INTERNAL AREAS. MEASURED FROM THE INSIDE PERIMETER OF THE WALLS AND INCLUDE THE AREAS OF CABINETS. ALL ELEMENTS ON THIS DOCUMENT ARE MERELY AN INDICATION AND DO NOT HOLD ANY CONTRACTUAL VALUE. THIS PROJECT IS CURRENTLY UNDER CONSTRUCTION, THUS THE DEVELOPER RESERVES TO HIMSELF THE RIGHT TO CHANGE ANY DEFINITION AS A RESULT OF TECHNICAL OR SUPPLY RESTRICTIONS.

ALMIRANTE REIS 246

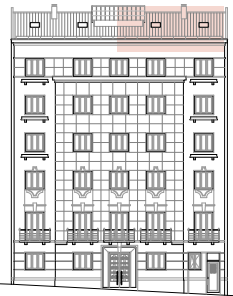


Building overview

100 mts from metro station (Areiro)
photovoltaic panels for energy production in common areas
pre-existent elevator
LED lights
rehabilitation of stairs and hall with existing materials

Apartments overview

double glazed PVC window frames
recovered pre-existent doors
wardrobes as represented in plan
LED lights
Photovoltaic panels for energy efficiency



Living room

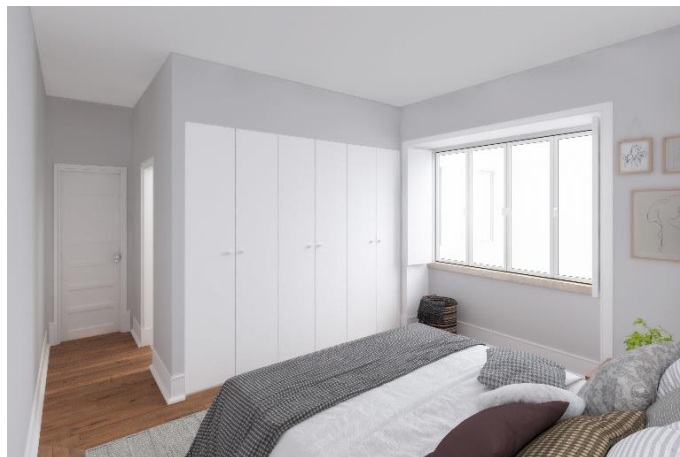
pre-existent hardwood floor
air conditioning multisplit system
plasterboard ceiling
sunsreen blinds



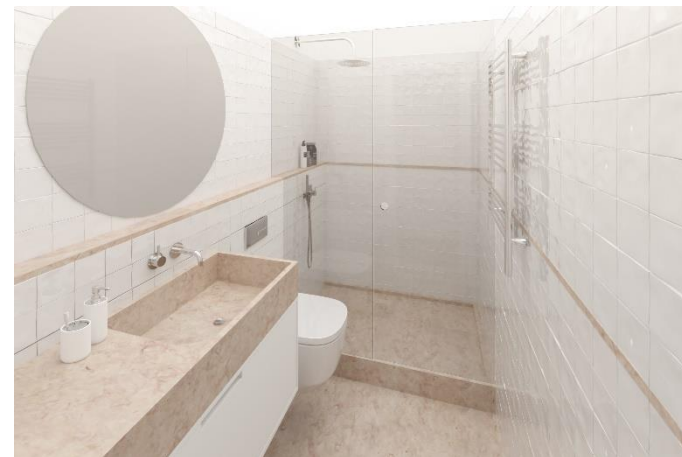
Kitchen

natural stone floor, countertop and backsplash
lacquered cabinets doors
heat pump for water heating by Vulcano
Zanussi appliances (hob, oven, microwave, extractor,
dishwasher, fridge freezers, washer-dryer)

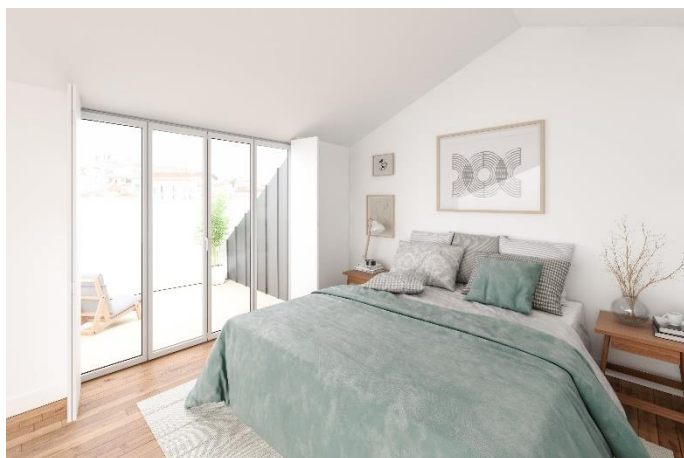
ALMIRANTE REIS 246



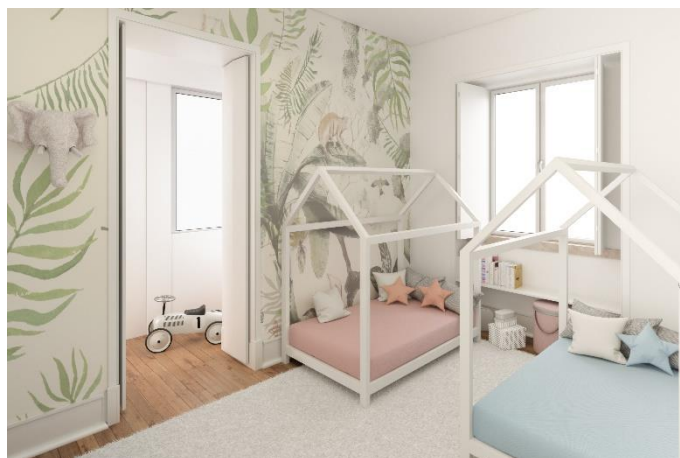
Suite
pre-existent hardwood floor
Daikin air conditioning multisplit system
plasterboard ceiling
wooden shutters



Ensuite bathroom
manual tiles and painted walls
natural stone floor
natural stone shower tray, countertop and washbasin
Sanitana and Bruma equipments
towel warmer



Master suite
pine hardwood floor
Daikin air conditioning multisplit system
plasterboard ceiling
wooden shutters
9,3 sqm terrace



Bedroom 1
pre-existent hardwood floor
Daikin air conditioning multisplit system
plasterboard ceiling
wooden shutters



Common bathroom
semi-manual tiles and painted walls
concrete floor
varnished Viroc cabinet (TBC)
enameled bathtub
Sanitana, Cifial and Bruma equipments
towel warmer