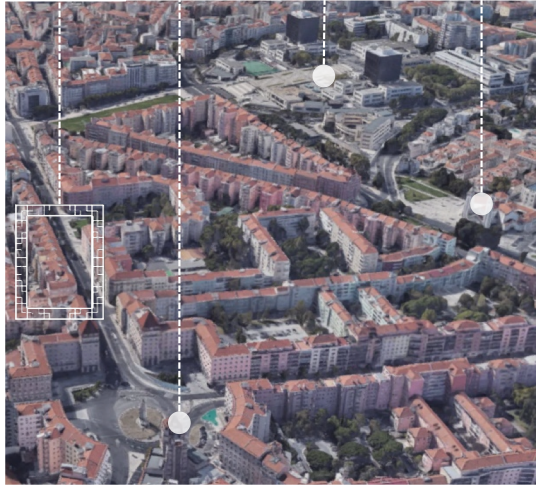


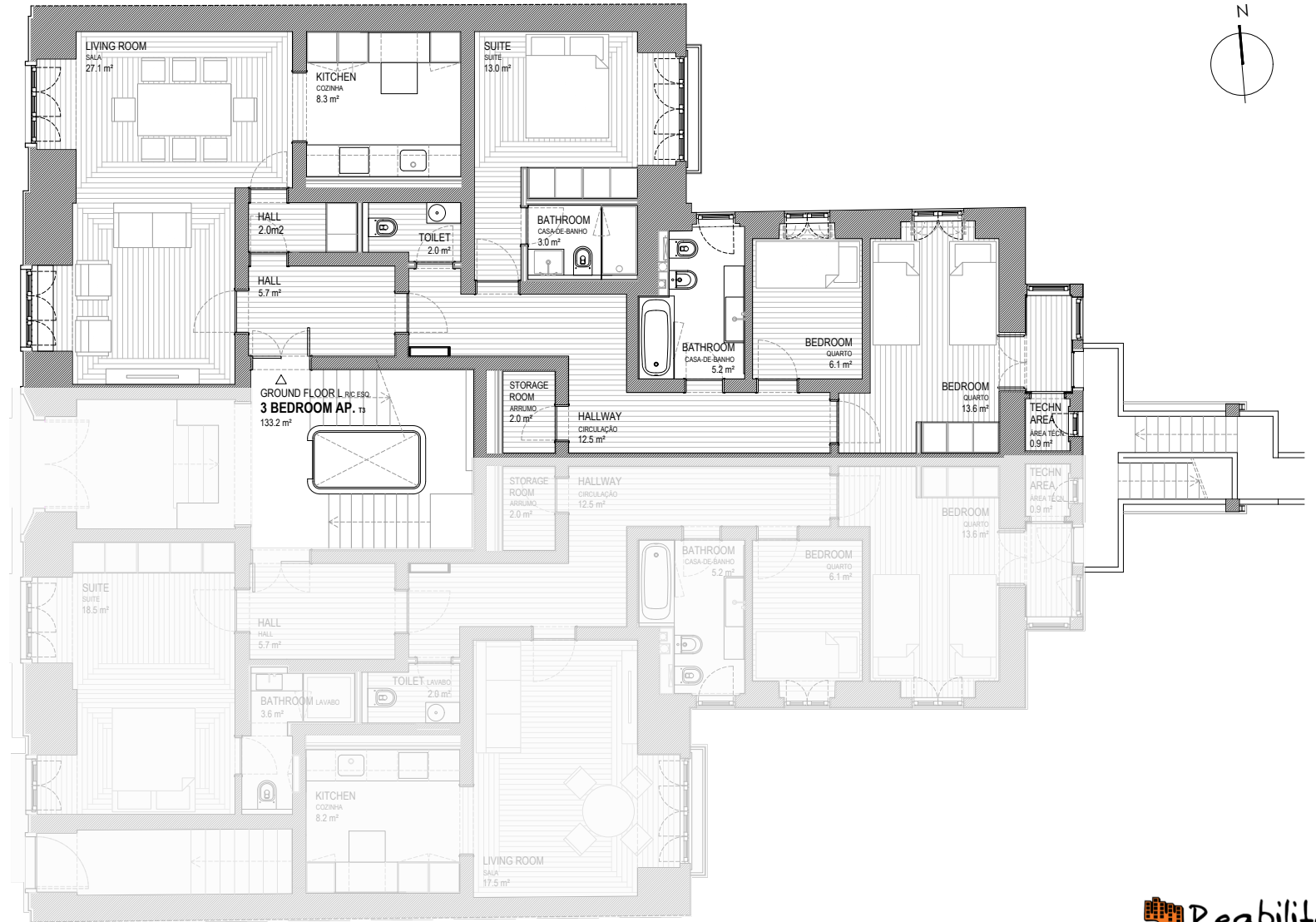
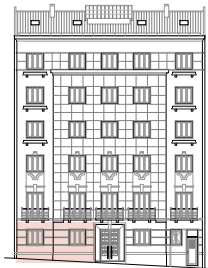
ALMIRANTE REIS 246



ALMIRANTE REIS 246 Pç. Areeiro I. S. Técnico Pç. Londres



Floor Ground floor left
Gross Interior Area 133,2 sqm



www.reabilita.pt
info@reabilita.pt
+351 919 235 265

THE GROSS AREA CORRESPOND TO THE TOTAL AREA OF THE UNIT, MEASURING FROM THE OUTER PERIMETER OF THE WALLS AND WALLS SEPARATING THE AXES OF THE UNIT, NOT INCLUDING TERRACES AND BALCONIES. THE AREAS INDICATED IN THE COMPARTMENTS ARE NET INTERNAL AREAS, MEASURED FROM THE INSIDE PERIMETER OF THE WALLS AND INCLUDE THE AREAS OF CABINETS. ALL ELEMENTS ON THIS DOCUMENT ARE MERELY AN INDICATION AND DO NOT HOLD ANY CONTRACTUAL VALUE. THIS PROJECT IS CURRENTLY UNDER CONSTRUCTION, THUS THE DEVELOPER RESERVES TO HIMSELF THE RIGHT TO CHANGE ANY DEFINITION AS A RESULT OF TECHNICAL OR SUPPLY RESTRICTIONS.

ALMIRANTE REIS 246

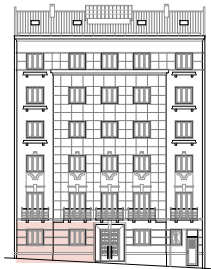


Building overview

100 mts from metro station (Areeiro)
photovoltaic panels for energy production in common areas
pre existent elevator
LED lights
rehabilitation of stairs and hall with existing materials

Apartments overview

double glazed PVC window frames
recovered pre-existent doors
wardrobes as represented in plan
LED lights



Living room

pre-existent hardwood floor
air conditioning multisplit system
plasterboard ceiling
sunsreen blinds



Kitchen

natural stone floor, countertop and backsplash
lacquered cabinets doors
electric water heat by Ariston RIGHT / Vulcano LEFT
Zanussi appliances (hob, oven, microwave, extractor,
dishwasher, fridge freezers, washer-dryer)

ALMIRANTE REIS 246

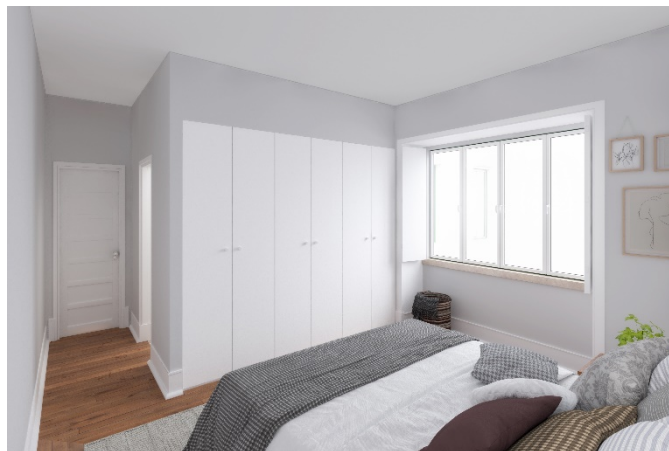
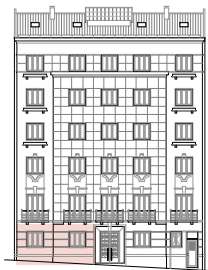


Building overview

100 mts from metro station (Areeiro)
 photovoltaic panels for energy production in common areas
 pre-existent elevator
 LED lights
 rehabilitation of stairs and hall with existing materials

Apartments overview

double glazed PVC window frames
 recovered pre-existent doors
 wardrobes as represented in plan
 LED lights



Suite

pre-existent hardwood floor
 Daikin air conditioning multisplit system
 plasterboard ceiling
 wooden shutters



Bedroom 1

pre-existent hardwood floor
 Daikin air conditioning multisplit system
 plasterboard ceiling
 wooden shutters



Ensuite bathroom

manual tiles and painted walls
 natural stone floor
 natural stone shower tray, countertop and washbasin
 Sanitana and Bruma equipments
 towel warmer



Common bathroom

semi-manual tiles and painted walls
 concrete floor
 varnished Viroc cabinet (TBC)
 enameld bathtub
 Sanitana, Cifial and Bruma equipments
 towel warmer