

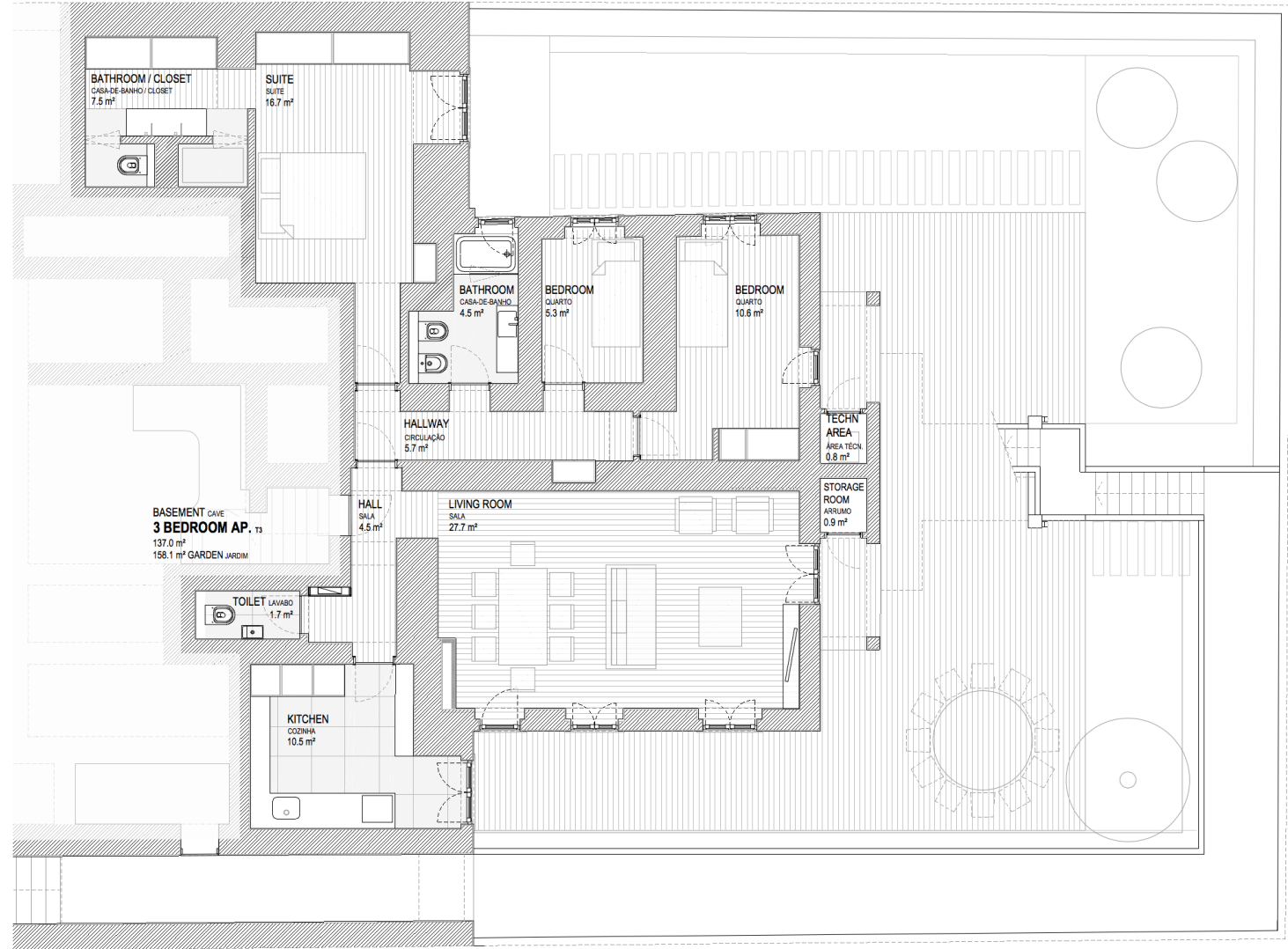
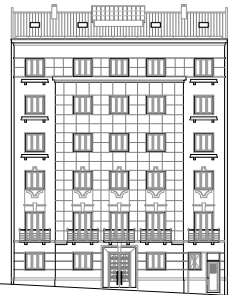
ALMIRANTE REIS 246



ALMIRANTE REIS 246 Pç. Areeiro I. S. Técnico Pç. Londres



Floor Basement – T3
Gross Interior Area 137 sqm
Exterior area 158 sqm



ALMIRANTE REIS 246

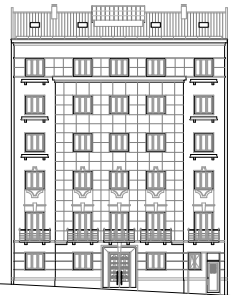


Building overview

100 mts from metro station (Areiro)
 photovoltaic panels for energy production in common areas
 pre existent elevator
 LED lights
 rehabilitation of stairs and hall with existing materials

Apartment overview

double glazed PVC window frames
 wardrobes as represented in plan
 LED lights
 Outdoor area



Outdoor area
 deck floor
 green areas
 small storage



Kitchen *

natural stone floor, countertop and backsplash
 lacquered cabinets doors
 heat pump for water heating by Vulcano
 Zanussi appliances (hob, oven, microwave, extractor, dishwasher, fridge freezers, washer-dryer)



Common bathroom *

semi-manual tiles and painted walls
 concrete floor
 varnished Viroc cabinet (TBC)
 enameled bathtub
 Sanitana, Cifial and Bruma equipments
 towel warmer

* images not corresponding to reality, only for illustrative purpose of materials and textures