

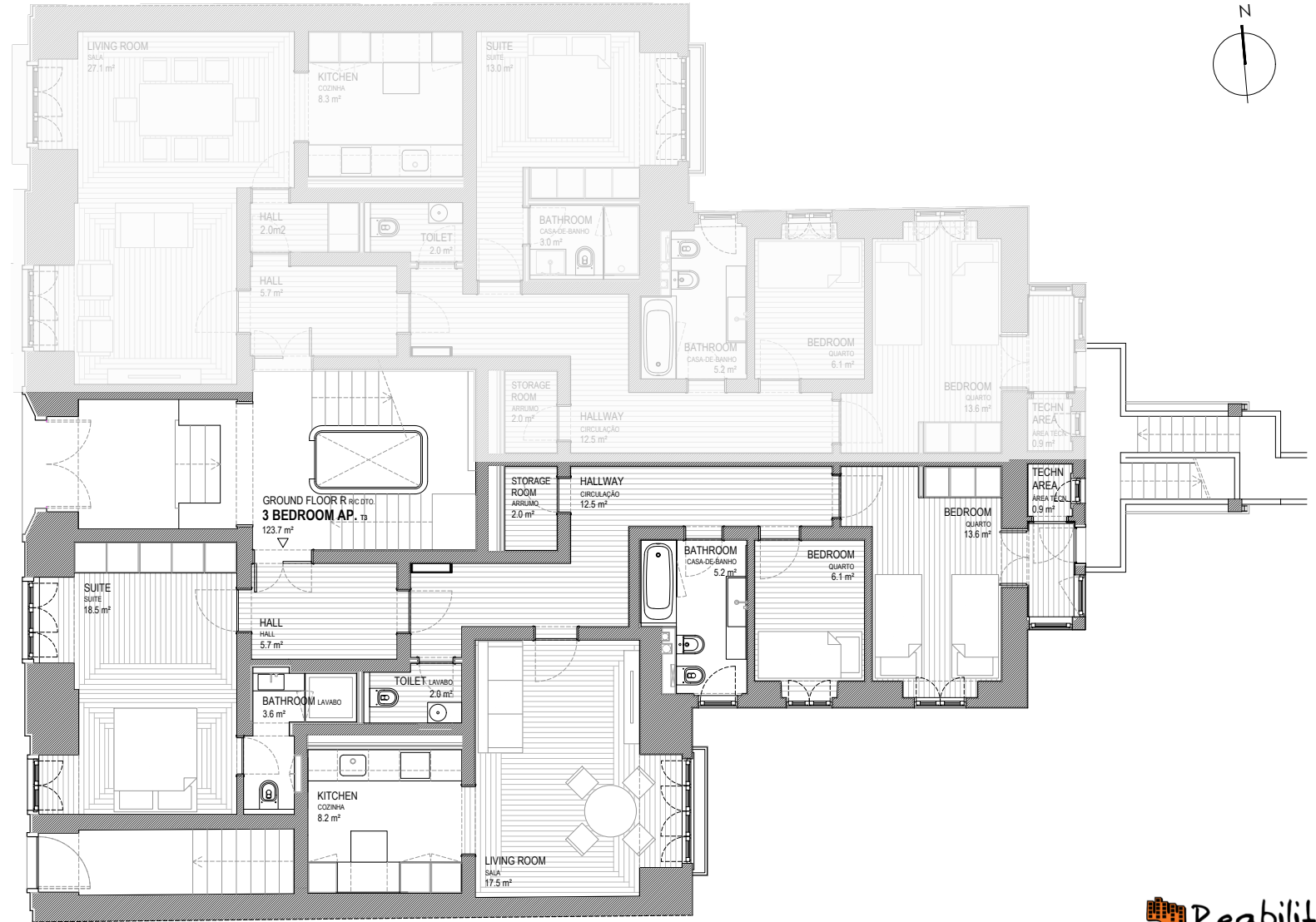
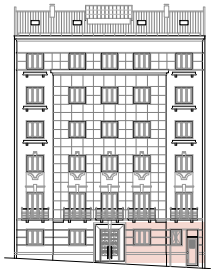
ALMIRANTE REIS 246



ALMIRANTE REIS 246 Pç. Areeiro I. S. Técnico Pç. Londres



Floor Ground floor right
Gross Interior Area 123,7 sqm



ALMIRANTE REIS 246

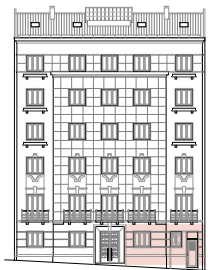


Building overview

100 mts from metro station (Areeiro)
photovoltaic panels for energy production in common areas
pre existent elevator
LED lights
rehabilitation of stairs and hall with existing materials

Apartments overview

double glazed PVC window frames
recovered pre-existent doors
wardrobes as represented in plan
LED lights



Living room

pre-existent hardwood floor
air conditioning multisplit system
plasterboard ceiling
sunsreen blinds



Kitchen

natural stone floor, countertop and backsplash
lacquered cabinets doors
electric water heat by Ariston RIGHT / Vulcano LEFT
Zanussi appliances (hob, oven, microwave, extractor,
dishwasher, fridge freezers, washer-dryer)

ALMIRANTE REIS 246

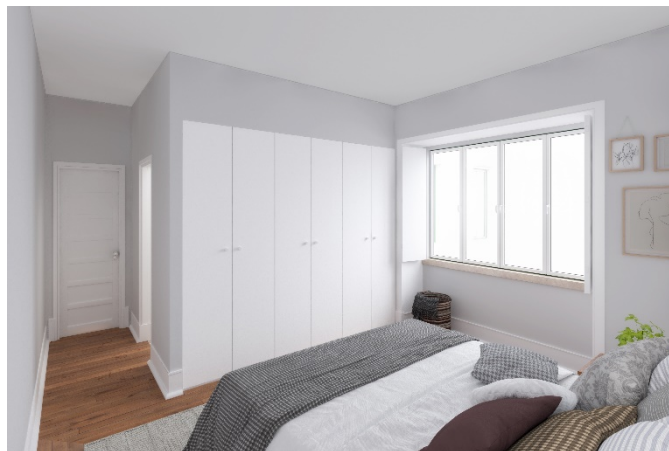
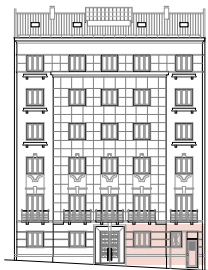


Building overview

100 mts from metro station (Areeiro)
 photovoltaic panels for energy production in common areas
 pre-existent elevator
 LED lights
 rehabilitation of stairs and hall with existing materials

Apartments overview

double glazed PVC window frames
 recovered pre-existent doors
 wardrobes as represented in plan
 LED lights



Suite

pre-existent hardwood floor
 Daikin air conditioning multisplit system
 plasterboard ceiling
 wooden shutters



Bedroom 1

pre-existent hardwood floor
 Daikin air conditioning multisplit system
 plasterboard ceiling
 wooden shutters



Ensuite bathroom

manual tiles and painted walls
 natural stone floor
 natural stone shower tray, countertop and washbasin
 Sanitana and Bruma equipments
 towel warmer



Common bathroom

semi-manual tiles and painted walls
 concrete floor
 varnished Viroc cabinet (TBC)
 enameld bathtub
 Sanitana, Cifial and Bruma equipments
 towel warmer