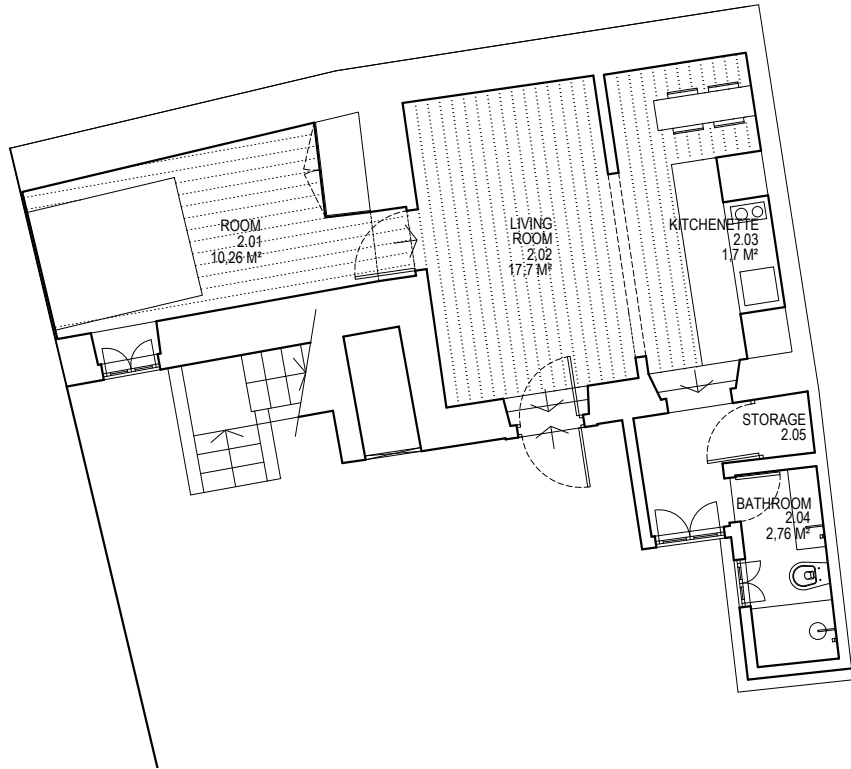


2nd floor

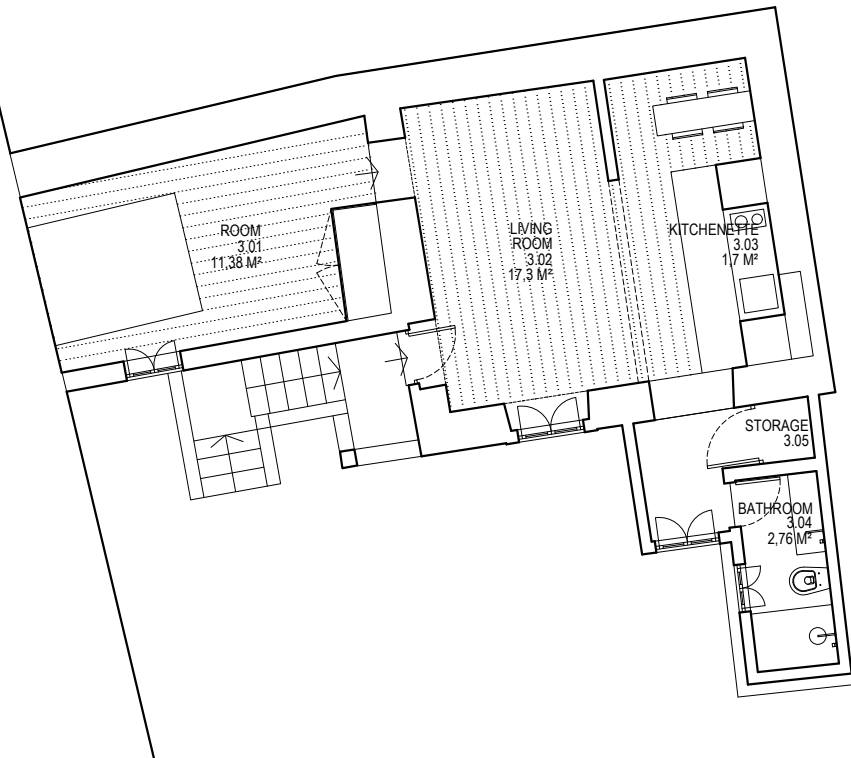
5



5

3rd floor

5



5

	<b>RUA DO SALVADOR 36 A 38 - 2nd and 3rd floor</b>	
	PRELIMINARY STUDY	INTERIOR GROSS AREA 2nd - 52,1 sqm
	PLAN - PROPOSAL	1:100 INTERIOR GROSS AREA 3rd - 50,4 sqm
	REABILITA   RUA DO INSTITUTO INDUSTRIAL, 18 2ª ESQ. 1200-255 LISBOA   WWW.REABILITA.PT	